

# UI Guidelines

## Access Systems

*DB Gurus*

### Document History

---

This section describes the changes of the document by version number.

<b>Version</b>	<b>Date</b>	<b>Initials</b>	<b>Description of change</b>
1	3 Apr 2008	JB	Initial Draft

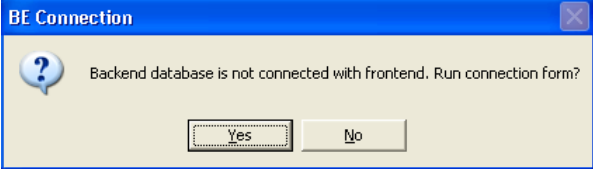
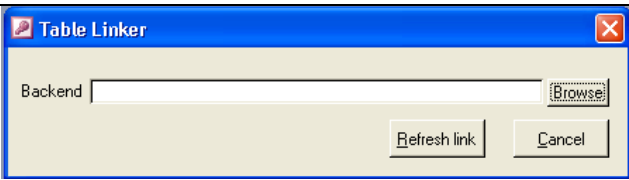
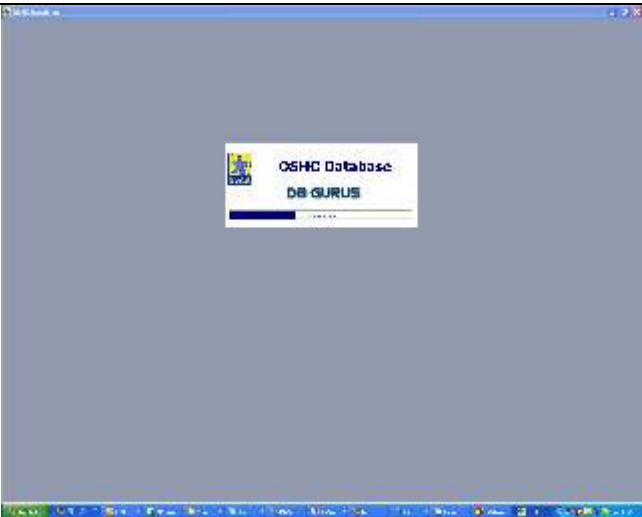
# Introduction

This section orientates the user (context or business problem)

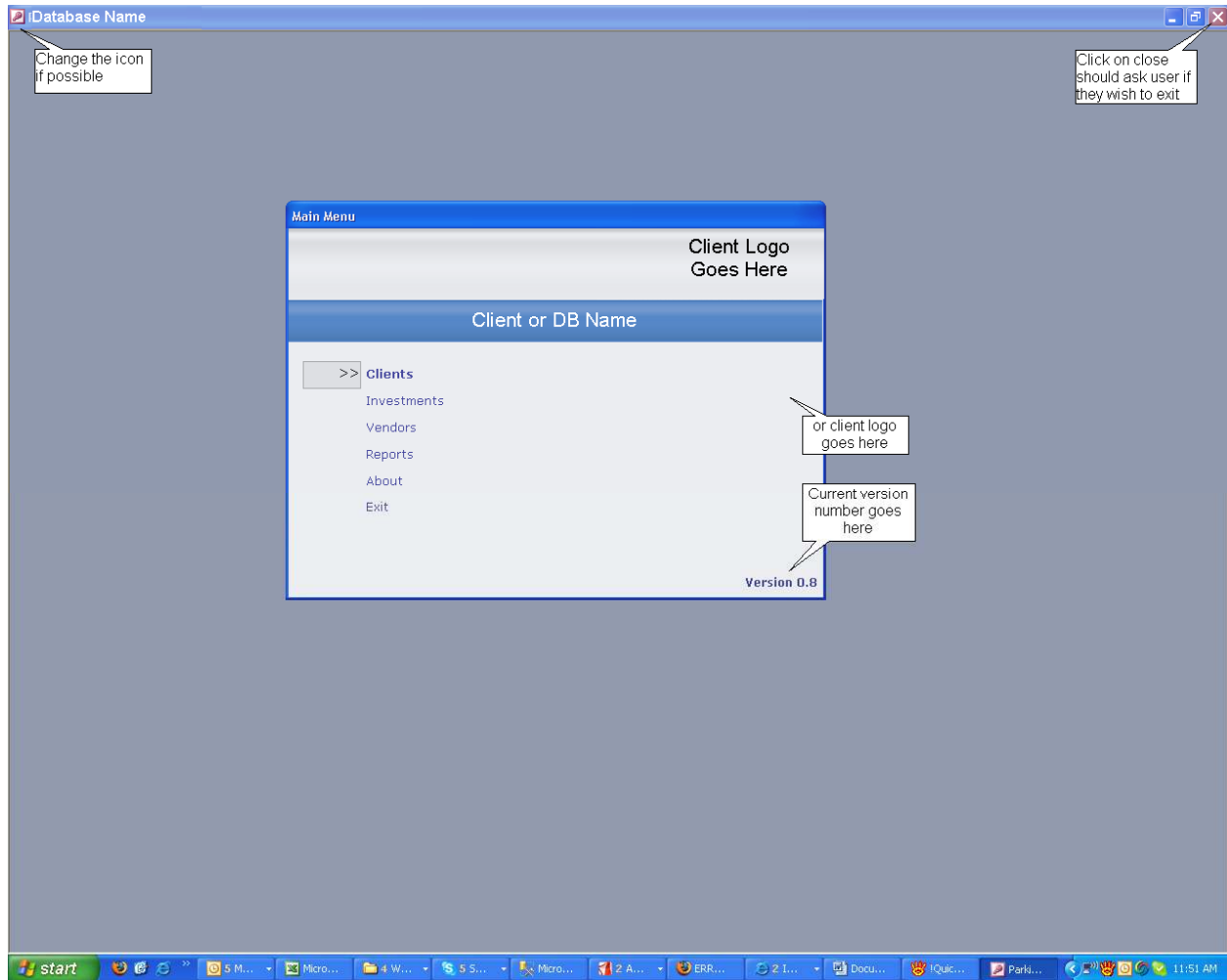
This document is intended to give our MS Access developers some guidelines on how an application should look.

# Startup

This section describes the proposed solution

<p>First thing the database does is check that it can locate the backend.</p> <p>If not this message is displayed.</p> <p><b>Note: I would prefer it to say "Database Back End Connection" as the window title.</b></p>	 <p>The screenshot shows a dialog box titled "BE Connection" with a question mark icon. The text inside reads: "Backend database is not connected with frontend. Run connection form?". There are two buttons: "Yes" and "No".</p>
<p>On answering Yes this screen is displayed</p> <p><b>Note: I would prefer it to say "Select Database Back End" as the window title.</b></p>	 <p>The screenshot shows a dialog box titled "Table Linker" with a red 'X' icon. It contains a text field labeled "Backend" with a "Browse" button to its right. Below the text field are two buttons: "Refresh link" and "Cancel".</p>
<p>On startup we normally display a splash screen during the load</p> <p><b>Note: I would like to have the one with the progress bar as our standard (as per the OSHC database).</b></p>	 <p>The screenshot shows a splash screen with a blue background. In the center, there is a white box containing the text "OSHC Database" and "DB GURUS" below it. A progress bar is visible at the bottom of the splash screen.</p>

## Switchboard



## Data Entry Forms

Client
✕

A	
B	er & Westall
B	ns
C	ina, Tiffany & Evie Caz SA
F	
F	
F	3c ahm
F	ai Jc :s SA
F	ie NSW
K	
L	
L	
M	ading & Jodie Smith & SA
M	ai ion
R	
T	ivt ement Trust
T	
V	ie tc
V	:s

Total: 20

Name

Address

Suburb

State  Post Code

Contact

Telephone  Facsimile

Email

Referer

Notes

	Property Address	Status	Vendor	Comm
▶	3 Hills Rd	New	C Homes (Blacks beach)	

Change By 
Change Date

Note that the data has been partially hidden up in this image

## Technical Details – Access Solution

---

The minimum specification for the computer running the database is as follows:

<b>Processor</b>	Pentium 133 megahertz (MHz) or higher processor; Pentium III recommended
<b>Operating System</b>	<b>x32-bit based systems</b> Microsoft® Windows®: 98 2 <sup>nd</sup> Edition, NT 4, 2000 Professional XP Professional or Home Edition
<b>Minimum Software</b>	.NET Framework 2.0 Redistributable Microsoft Internet Explorer 6.0 with Service Pack 1 Microsoft Data Access Components (MDAC) 2.8 Windows Installer 3.0 IIS Version 6.0
<b>RAM</b>	512 megabytes (MB)
<b>Hard Disk Space</b>	170MB (including 200MB for the .NET Framework Redistributable)
<b>Display</b>	Minimum: 800 x 600 256 colours Recommended: 1024 x 768 High Colour – 16-bit
<b>Database</b>	The system will be developed in Microsoft Access 2003 and may well use 3 <sup>rd</sup> party DLLs to extend the capabilities of Access.
<b>Documentation</b>	All documentation will be created in MS Word format and published as PDF files.

## Appendices

---

### Appendix 1 : Control Definitions